

My SeaTac Home!



2433 S. 146th St, Seatac, WA 98168

WEB: MySeaTacHome.com

- » **Beds:** 3 | **Baths:** 2 Full, 1 Half
- » **MLS #:** 1359575
- » Single Family | 1,530 ft² | Lot: 8,280 ft²
- » This home is a commuter's dream!
- » Get to just about every major Seattle highway and the airport in a matter of minutes.
- » Close to Southcenter Mall, Downtown Burien, Airport, most all major highways
- » Clean, well maintained and move in ready!
- » You get so much more for the \$\$\$ in this great hood!

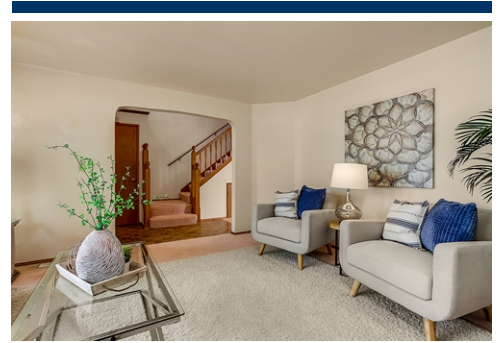
QR Code



Devon DeHaas
(206) 325-6111
devondehaas@cbbain.com
<http://www.devondehaas.com>



Coldwell Banker Bain
1661 East Olive Way
Seattle, WA 98102



This home is a commuter's dream! Get to just about every major Seattle highway and the airport in a matter of minutes. Super convenient location with tons of shopping and entertainment just a hop skip and a jump away! Pop over to Southcenter Mall for some retail therapy or to catch the latest blockbuster on the big screen. Jump on the light rail for a stress-free, quick ride to Downtown to catch a Mariners or Hawks game, Capitol Hill for a night on the town or a Husky game at UW. Swing over to hip downtown Burien for a bite or happy hour with friends. Stroll through Highline Botanical Gardens or explore the many nearby parks. You get so much more for the \$\$\$ in this great hood!

